



ILLINOIS DRAFTING EDUCATORS ASSOCIATION

INTRODUCTORY DRAFTING TEST COMPUTER-AIDED DRAFTING

IDEA STATE 2008

DO NOT OPEN BOOKLET UNTIL INSTRUCTED TO DO SO

GETTING STARTED:

INSTRUCTIONS:

PLEASE READ THE FOLLOWING INSTRUCTIONS CAREFULLY.....

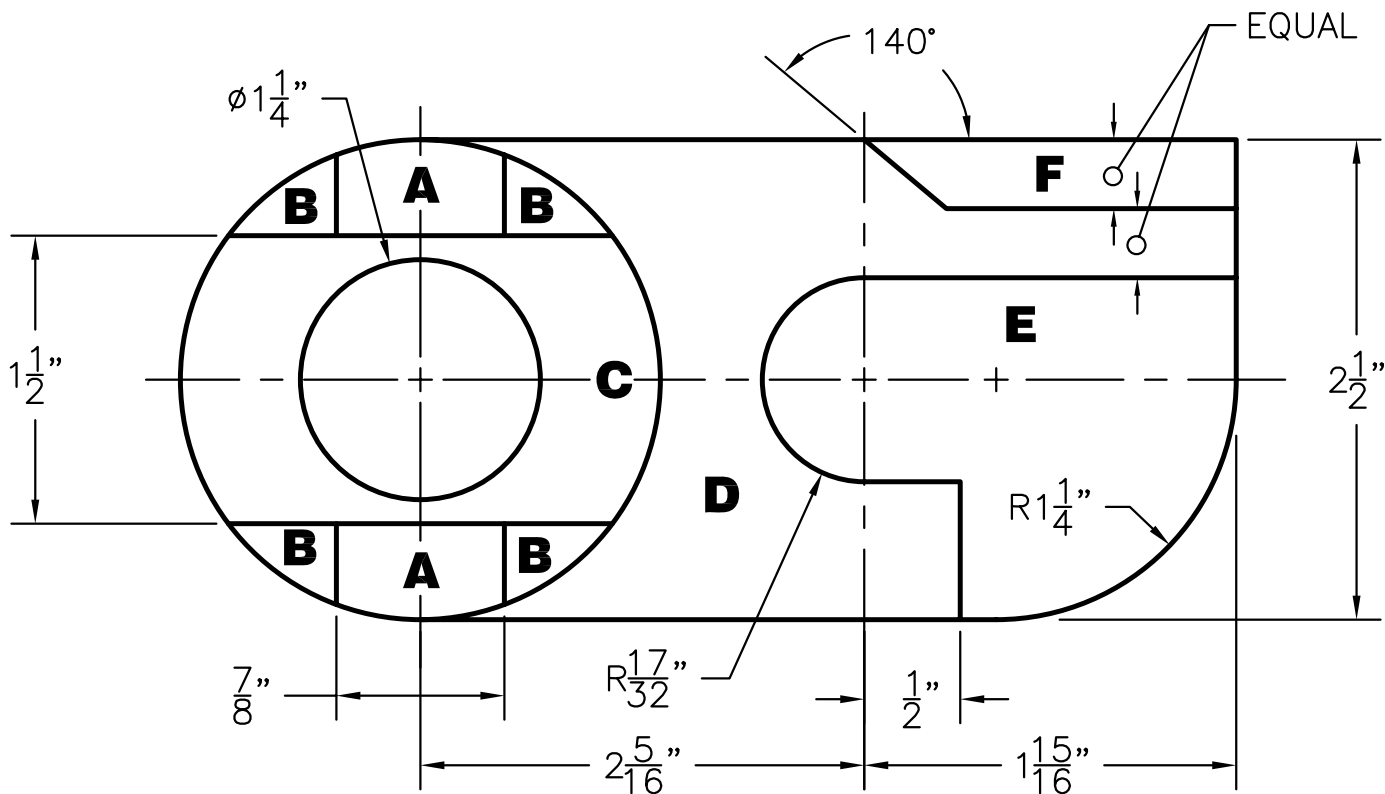
1. PLACE YOUR CONTESTANT NUMBER IN THE TITLE BLOCK OF THE ANSWER SHEET. DO NOT PLACE YOUR NAME OR SCHOOL NAME ON THAT SHEET.
2. ON THE FOLLOWING PAGE YOU ARE GIVEN THE TOP VIEW OF AN "INDEXING FIXTURE," AND A TABLE WITH HEIGHT MEASUREMENTS OF THE PART.
3. CONSTRUCT A FULL-SCALE [REAL SIZE] MULTIVIEW DRAWING, COMPLETE WITH FRONT, TOP, & RIGHT SIDE VIEW. IMPORTANT! YOU MAY NOT HAVE TO CONSTRUCT THE ENTIRE MULTIVIEW, BUT ONLY THE NECESSARY GEOMETRY TO CHECK THE REQUIRED DISTANCES.
4. BEFORE ANSWERING THE QUESTIONS, YOU SHOULD SET THE CAD SYSTEM TO THREE DECIMAL PLACES WHEN CHECKING DISTANCES. NOTE: THE JUDGE'S ANSWER KEY USES A CAD SOLUTION THAT DID NOT ROUND OFF FRACTIONS, BUT RATHER USED FRACTIONAL INPUT. IF YOU USE DECIMAL INPUT, IT IS RECOMMENDED THAT YOU DO NOT ROUND OFF DECIMALS.
5. USING THE CHECKING ASSIGNMENT SHEET, VISUALIZE WHERE THE LABELED POINTS ARE IN EACH VIEW AND CHECK 2D DISTANCES WITHIN EACH VIEW. ENSURE THAT YOU ARE CHECKING IN THE CORRECT VIEW.
6. THE DRAWING WILL BE NOT BE PLOTTED OR SAVED. YOU MAY SAVE YOUR WORK TO A PERSONAL STORAGE DEVICE IF YOU BROUGHT ONE.

INDEXING FIXTURE DESCRIPTION:

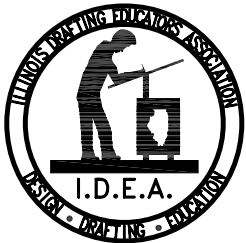
BELOW THIS NOTE IS A FULL SCALE TOP VIEW OF THE OBJECT. ALL SURFACE SHAPES SEEN FROM THE TOP VIEW ARE LETTERED, AND THEY ARE FLAT, HORIZONTAL NORMAL SURFACES.

SEE THE CHART FOR HEIGHT MEASUREMENTS OF THE NORMAL SURFACES ABOVE A
HYPOTHETICAL "ZERO" GROUND PLANE.

AS DIRECTED ON THE COVER PAGE, CONSTRUCT A FULL SIZE FRONT, TOP, AND RIGHT SIDE VIEW. USE STANDARD VIEW ARRANGEMENT AND LINE STANDARDS.



HEIGHT MEASUREMENTS	
SURFACE	TOTAL HEIGHT
A	2"
B	1-15/32"
C	1-5/32"
D	27/32"
E	7/16"
F	11/32"



INTRODUCTORY REFERENCE SHEET

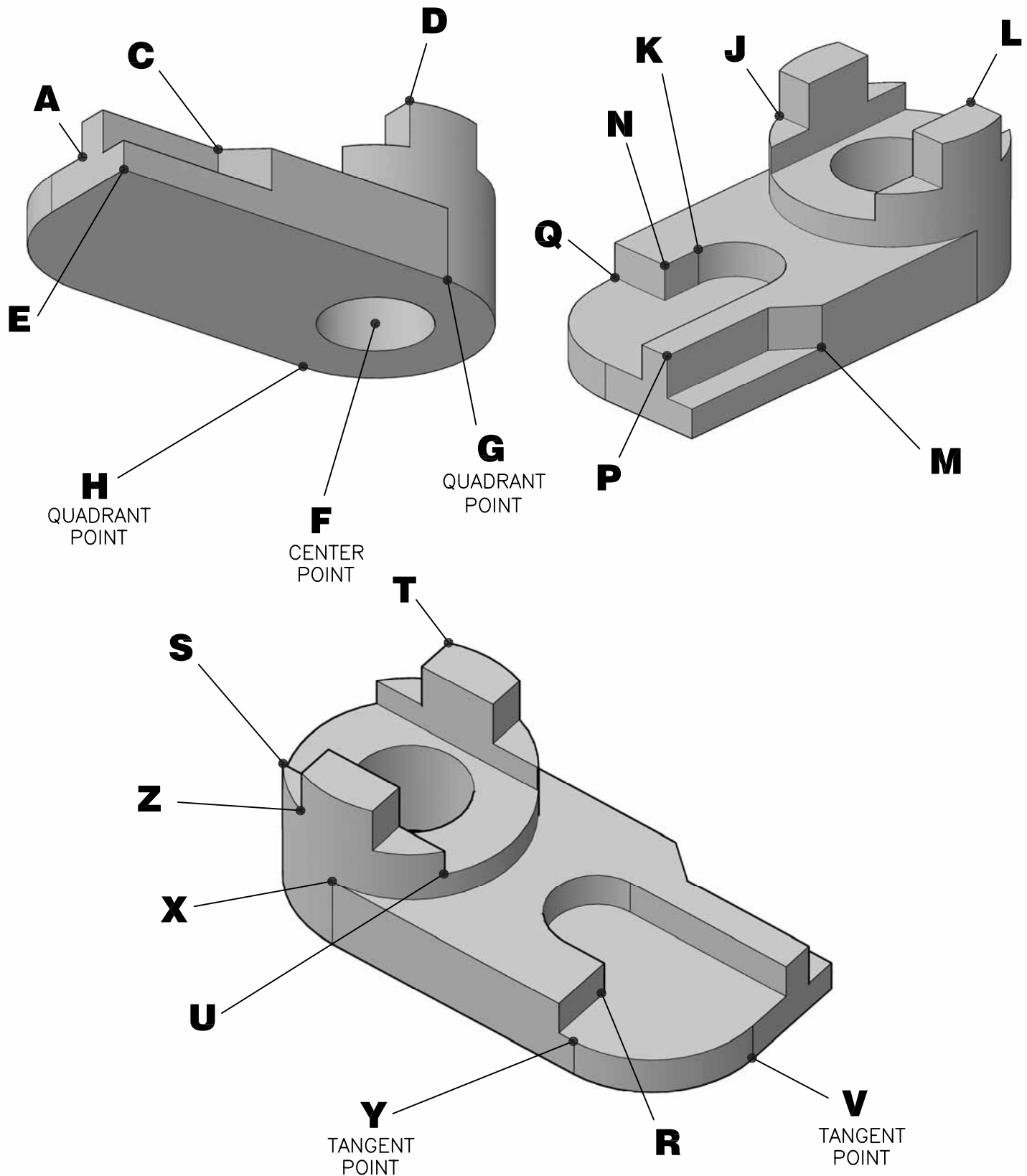
DATE: APRIL 2008

REGISTRATION

SCALE: NONE

NUMBER:

ILLINOIS DRAFTING EDUCATORS ASSOCIATION STATE DRAFTING COMPETITION



INTRODUCTORY CONTEST CHECKING GUIDE

DATE: APRIL 2008

SCALE: NONE

REGISTRATION

NUMBER:

ILLINOIS DRAFTING EDUCATORS ASSOCIATION
STATE DRAFTING COMPETITION

FOR THE FOLLOWING DISTANCE CHECKS, YOU WILL NOT BE CHECKING THE TRUE 3D DISTANCE BETWEEN POINTS, BUT ONLY THE 2D DISTANCE BETWEEN POINTS IN A PARTICULAR VIEW. THIS REQUIRES YOU TO VISUALIZE THE LOCATION OF THE SPECIFIED CORNERS IN A PARTICULAR VIEW.

FOR EACH ITEM, USE THE CHECK GUIDE SHEET, YOUR CAD SYSTEM (SET TO 3-PLACE DECIMAL PRECISION), AND YOUR CAD DRAWING TO DETERMINE A DISTANCE BETWEEN SPECIFIED POINTS. PLACE THE VALUE FOR EACH DISTANCE CHECK IN THE BLANK AS A NUMBER WITH THREE PLACE DECIMAL PRECISION. (i.e. 4.378)

**PLEASE PLACE YOUR CONTESTANT
NUMBER IN THE TITLE BLOCK**

PLACE ANSWER HERE



FRONT VIEW DISTANCE CHECKS

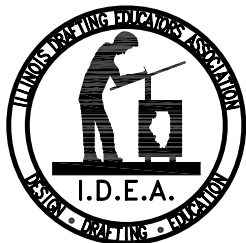
- | | |
|------------|-------------------|
| 1. D TO E | MY DISTANCE _____ |
| 2. A TO S | MY DISTANCE _____ |
| 3. H TO C | MY DISTANCE _____ |
| 4. F TO U | MY DISTANCE _____ |
| 5. X TO M | MY DISTANCE _____ |
| 6. L TO R | MY DISTANCE _____ |
| 7. K TO V | MY DISTANCE _____ |
| 8. Z TO P | MY DISTANCE _____ |
| 9. N TO J | MY DISTANCE _____ |
| 10. T TO G | MY DISTANCE _____ |

RIGHT SIDE VIEW DISTANCE CHECKS

- | | |
|------------|-------------------|
| 11. T TO Y | MY DISTANCE _____ |
| 12. D TO E | MY DISTANCE _____ |
| 13. R TO L | MY DISTANCE _____ |
| 14. F TO J | MY DISTANCE _____ |
| 15. M TO S | MY DISTANCE _____ |

TOP VIEW DISTANCE CHECKS

- | | |
|------------|-------------------|
| 16. X TO R | MY DISTANCE _____ |
| 17. S TO H | MY DISTANCE _____ |
| 18. A TO Z | MY DISTANCE _____ |
| 19. J TO C | MY DISTANCE _____ |
| 20. D TO E | MY DISTANCE _____ |



INTRODUCTORY CAD ANSWER SHEET

DATE: APRIL 2008

REGISTRATION

SCALE: NONE

NUMBER: _____

**ILLINOIS DRAFTING EDUCATORS ASSOCIATION
STATE DRAFTING COMPETITION**